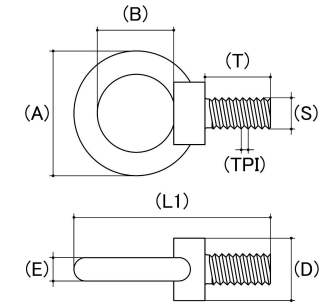


Eye Bolt Collar

Material: Stainless Steel

Class Grade: A4-70 G316

Corrosion Protection Level: Ultimate



*CAD drawings shown for graphic representation only.**

Size	Thread Pitch (mm)	Thread Type	Length L (1) (mm)		Thread Length (T) (mm)		Collar Width (D) (mm)		Inside dia. of Eye (B) (mm)		Width (A) (mm)		Thickness Of Eye (E) (mm)		Breaking Load	sku (qfind)
			Min	Max	Min	Max	Min	Max	Min	Max	Min	Max	Min	Max	Nom	
M6	1.00	Coarse	40.00	41.00	12.50	13.00	12.00	13.00	16.00	17.00	26.00	27.00	4.70	5.20	1100	61CEBS611M
M8	1.25	Coarse	48.00	49.00	14.50	15.00	14.00	16.00	20.00	21.00	32.00	33.00	5.70	6.20	1800	61CEBS815M
M10	1.50	Coarse	58.00	59.00	17.70	18.40	18.00	20.00	25.00	26.00	39.00	41.00	7.20	7.70	2000	61CEBS1021M
M12	1.75	Coarse	72.00	73.00	20.60	21.30	22.00	24.00	30.00	31.00	48.00	50.00	9.50	10.00	3000	61CEBS1223M
M16	2.00	Coarse	86.00	87.00	25.70	26.40	27.00	30.00	34.00	35.00	58.00	60.00	12.10	12.60	6500	61CEBS1625M
M20	2.50	Coarse	98.00	100.00	28.70	29.40	30.00	32.00	39.00	40.00	68.00	70.00	14.90	15.50	9000	61CEBS2032M
M24	3.00	Coarse	122.00	124.00	38.70	39.40	48.00	50.00	49.00	50.00	87.00	89.00	19.00	19.70	11000	61CEBS2440M

Disclaimer:

Dimensional data and technical information was obtained from publically available sources and not acquired through standard agencies. It has been completed and compiled for reference purposes only; where discrepancies are found they are subject to change without notice. Bolt & Nut Australia makes no warranties or representations regarding the accuracy and validity of the compiled information and data. Contact the relevant standard authorities for accurate and detailed information.

* CAD drawings may not reflect diameter, thread length or overall length.

© Bolt & Nut Australia Pty Ltd. All rights reserved.

Version: 18 Mar 2024